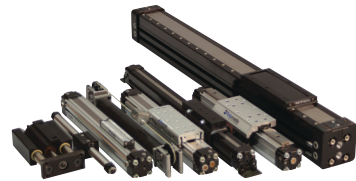
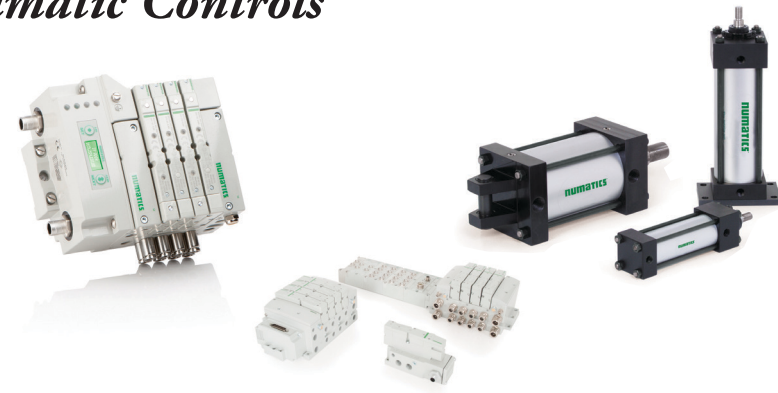


## Pneumatic Controls

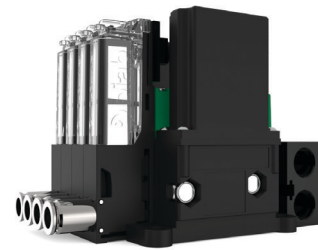
### Valves

Field Bus • Air • Water • Hydraulic  
Solenoid, Mechanical & Functional Valves



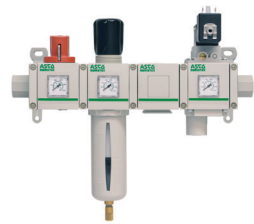
### Actuators

Air • Water • Hydraulic  
Brass & Stainless body, Compact Space-Saving,  
Rodless, Rotary, Grippers, Slides, NFPA



### Air Preparation

Filters Regulators & Lubricators, Air Dryers, Gauges, Exhaust  
Mufflers & Breather Vents



### Shock & Vibration Controls

Rotary & Linear Dampeners, Safety, Crane & Industrial Shock Absorbers, Air Bladder & Rubber  
Isolators, Gas Springs



### Connectors & Tubing

Industrial, Medical & Semiconductor Grade  
Tubing, Fittings & Quick Connects,  
RFID Quick Couplings



## Electronic Controls

### Automation Controls, PLC & Robots

Industrial, Motion & Logic Control  
Miniature & Rack-Style, Temperature Controls,  
SCARA, 6-Axis & Cartesian.

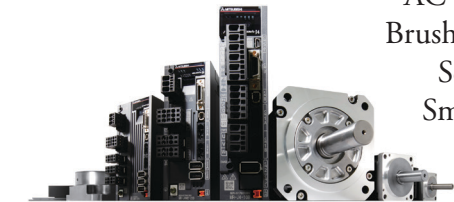


### Sensors

Photoelectric, Proximity, Inductive Capacitive,  
Fiber Optic, Reed & Hall Effect sensors for  
most manufactured cylinders,  
Pressure & Vacuum,  
Laser Measurement,  
Ultrasonic

### Motors & Drives

AC & DC Brush and  
Brushless Servo, Linear  
Servo, DC Stepper  
Smart ServoMotors,  
VFD Drives.



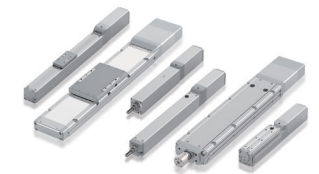
### Vision Systems

Low-Cost Compact, High Speed/High Accuracy, Color, Character Recognition, Lighting, Lamps,  
Lenses, Bar Code Readers



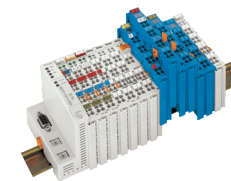
### Actuators

Rod & Rodless Linear, Screw & Belt Driven, Industrial, Clean  
Room, Food Grade (IP69K), & many others



### Fieldbus

- Master & Slave Devices
- All Protocols Supported
- EtherCAT®
- CC-Link
- EtherNet/IP
- CANBus & many others



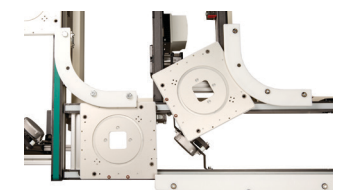
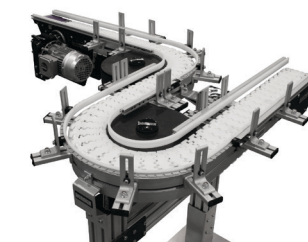
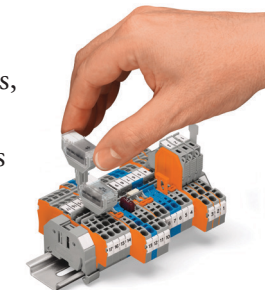
### Conveyors

Industrial, Food & Vacuum Type

Pallet type, Plastic Chain, Belt, Aluminum, Steel & Stainless  
Framed, USDA Approved

### Accessories

Power Supplies,  
Counters, Timers,  
Relays, Terminal  
Blocks, Field Bus  
I/O, & RFID



Clayton Controls, Inc. delivers exceptional quality solutions by starting with the most recognized brands in our industry. Our years of experience, qualified and knowledgeable employees are enhanced by the companies and brands we partner with everyday.

*Please call us or visit our website to request a quote.*



stay connected



Helping Customers Specify & Implement Solutions

Santa Ana Headquarters  
2865 Pullman St.  
Santa Ana, CA 92705  
Toll Free – (800) 235-4411  
info@claycon.com

Phoenix Office  
4343 N. Scottsdale Road, Suite #150  
Scottsdale, AZ 85252  
Direct – (480) 673-3327  
www.claytoncontrols.com

Campbell Office  
1671 Dell Ave., Suite 110  
Campbell, CA 95008  
Toll Free – (800) 341-4445  
Fax (714) 241-9203

